



## ***Combatting Homelessness in Sacramento County: A Collaborative Effort***

Cindy Cavanaugh

Director of Homeless Initiatives

Emily Halcon

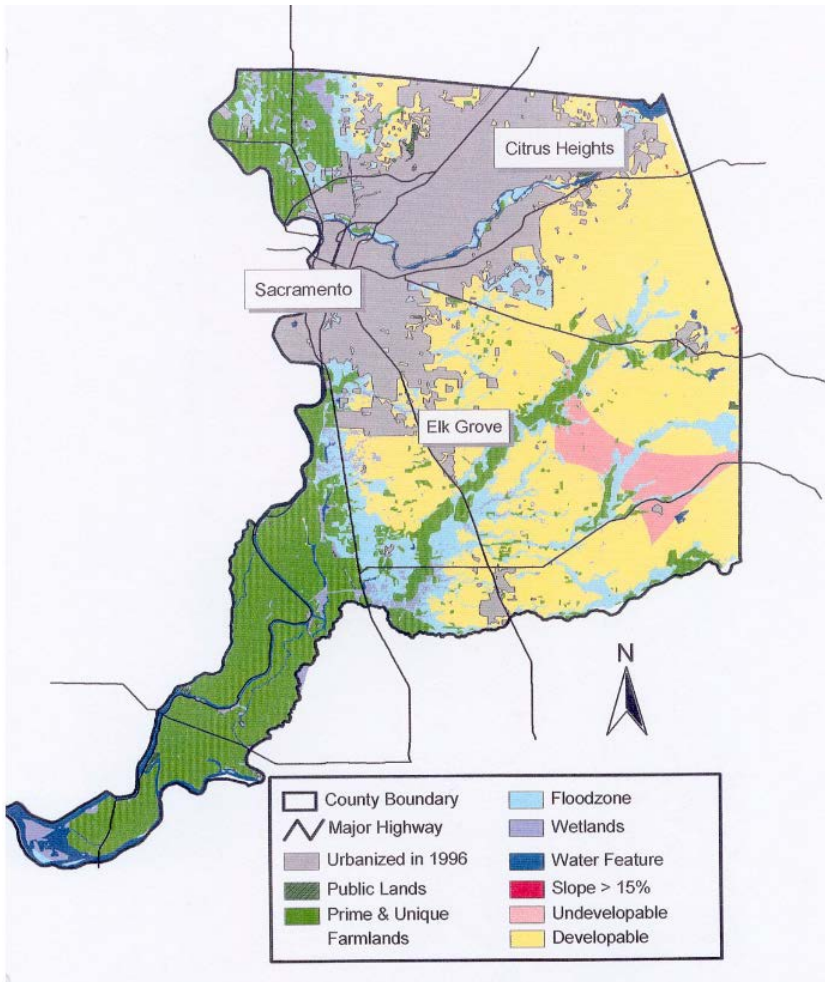
Homeless Services Coordinator

---

California State Association of Counties  
and League of California Cities

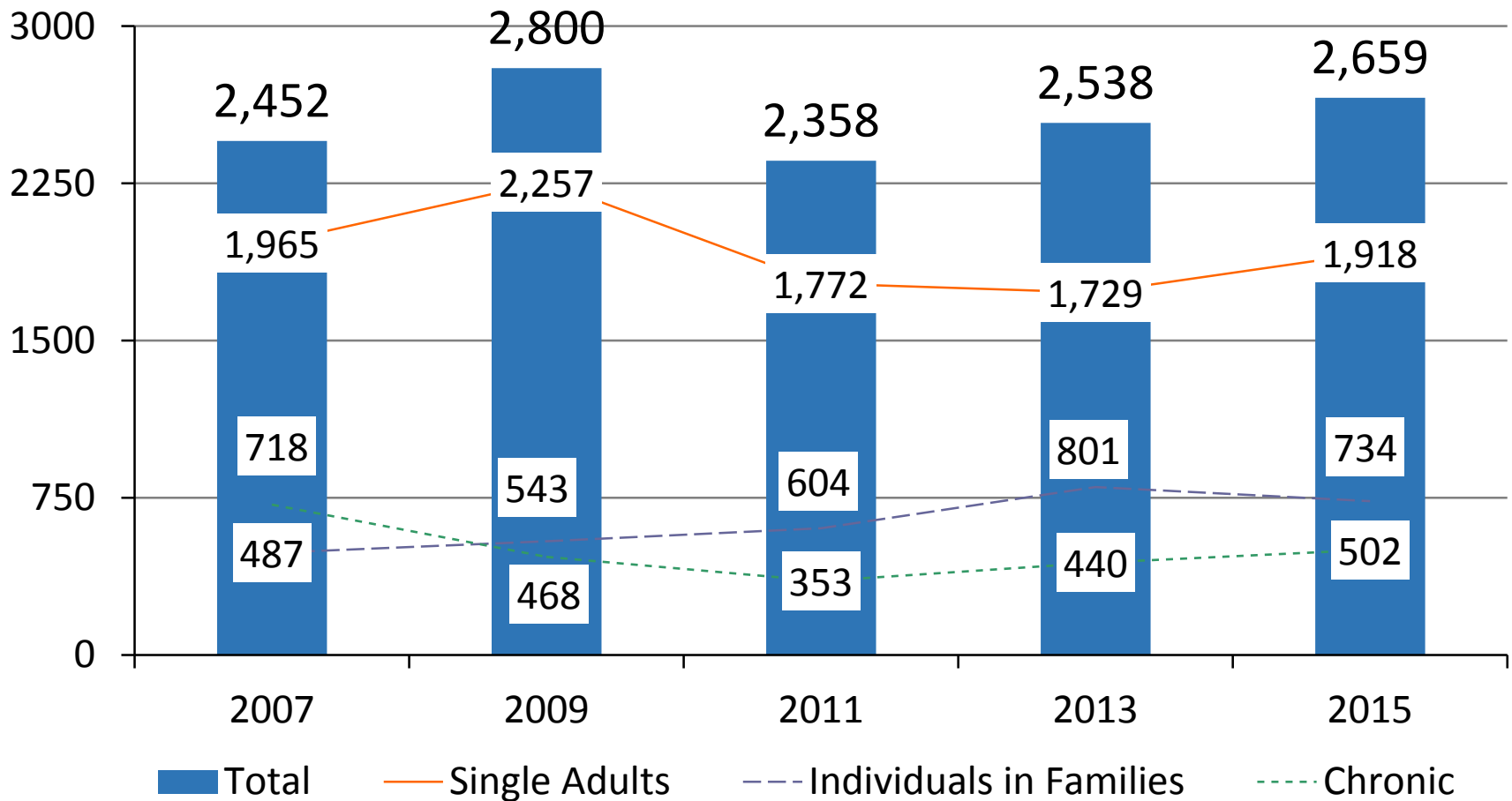
September 23, 2016

# Sacramento County



- Population of 1,418,788
  - 60% Caucasian
  - 10% African American
  - 14% Asian
  - 21% Hispanic/Latino
- Covers 994 square miles
- Median household income \$56,553
- 10.3% of families and 14.1% of the population live below the federal poverty line

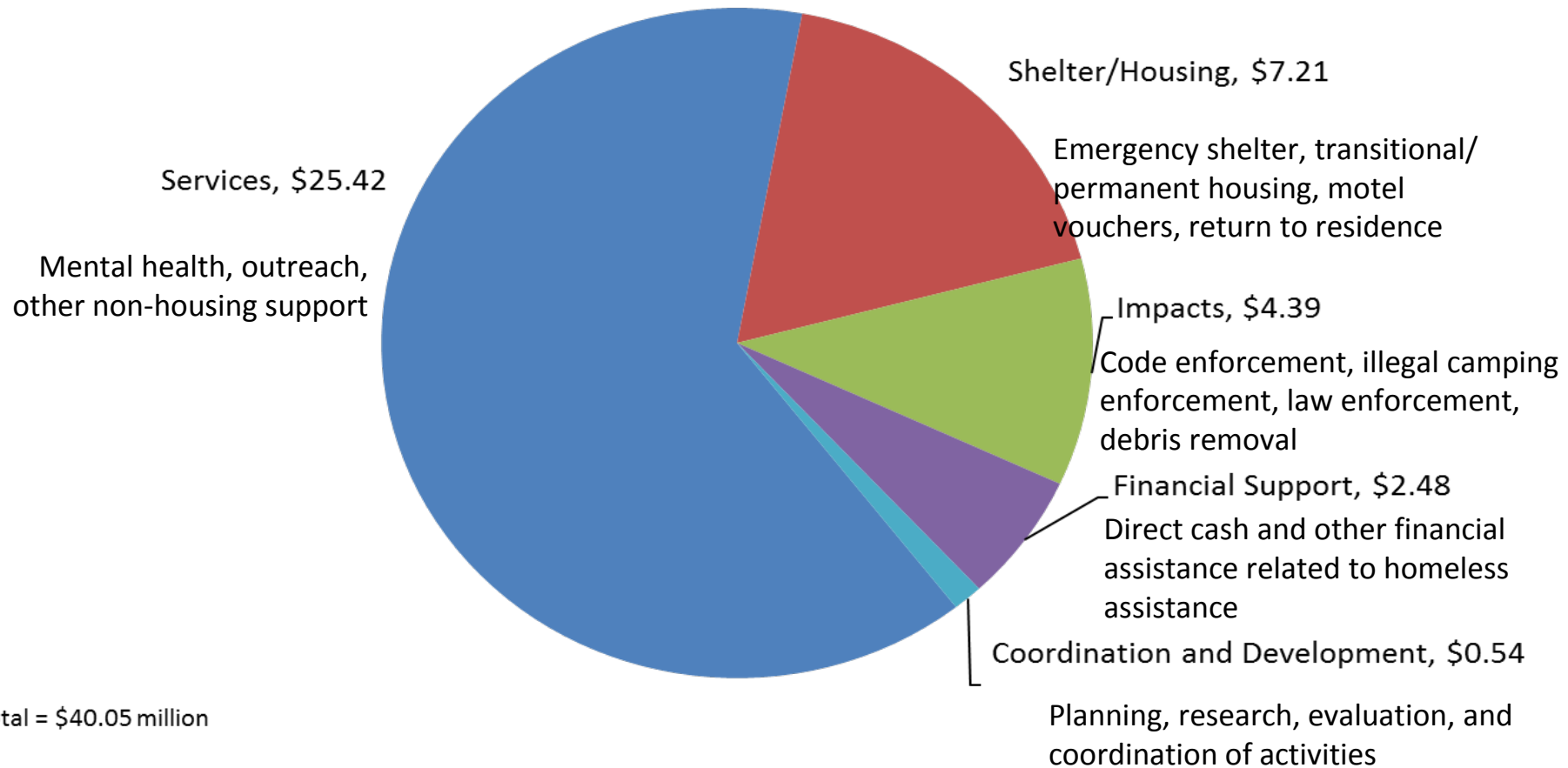
# Point In Time Homeless Count



# Major Homelessness Funding (FY 15/16)

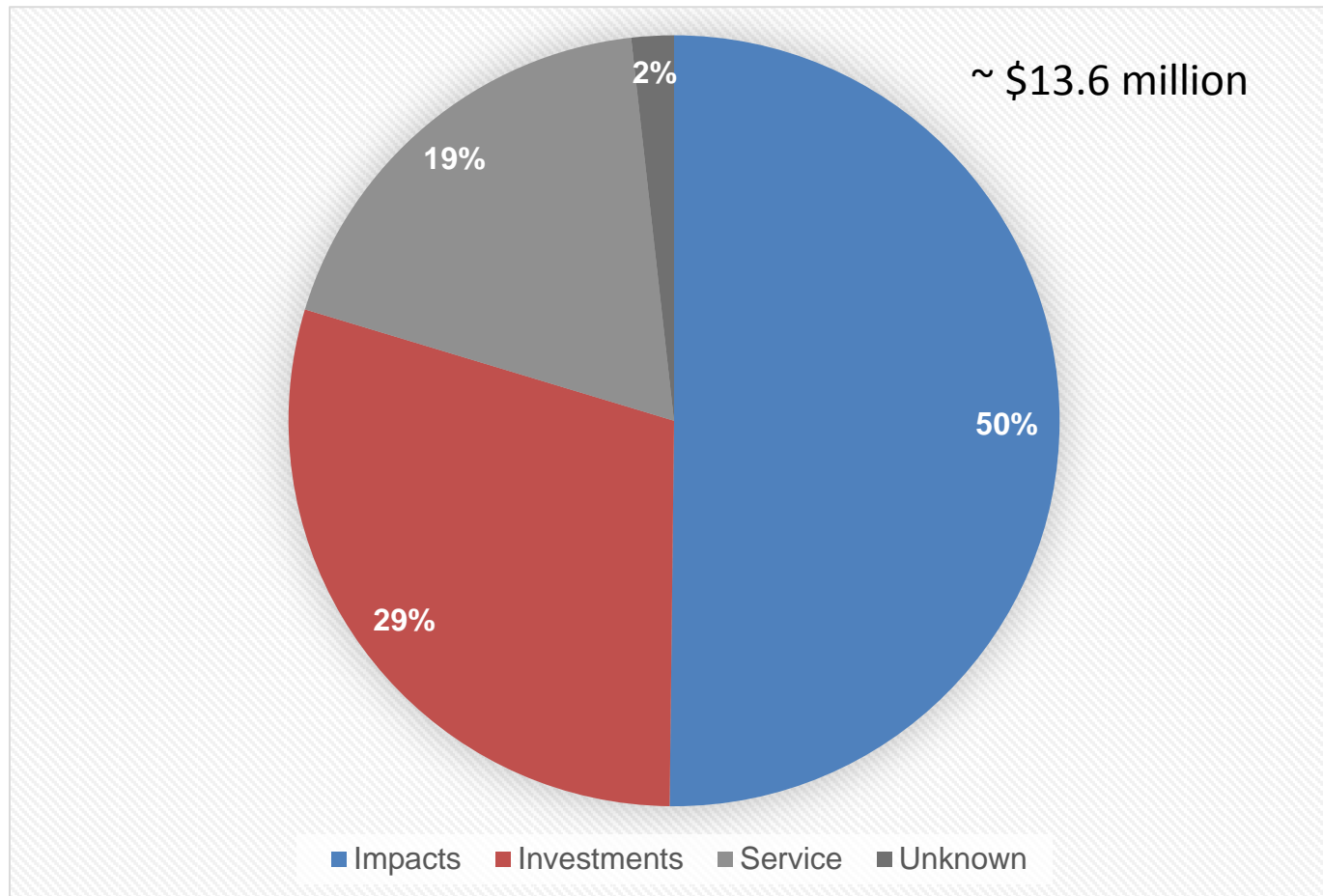
| Funding                          | Amount  | Agency   |
|----------------------------------|---|--|
| HUD Continuum of Care            | \$19 million  | Sacramento Steps Forward                           |
| Emergency Solutions Grant        | \$ 846,000 Federal<br>\$ 400,000 (State Pass Through)   | Sacramento Housing and Redevelopment Agency (SHRA) |
| HUD-VASH Vouchers                | \$ 362,000  | SHRA   |
| CalWorks Housing Support Program | \$1.8 million   | County   |
| Local funding                    | See next two slides: Local funding for shelters, vouchers, winter sanctuary, navigation, housing location services, Rapid Re-housing, CoC administration, evaluation, Point-in-time |  |

# County Homeless Cost by Activity (FY 14/15)



*This does not include over \$19 million in 2015 federal Continuum of Care funding administered for Sacramento County by Sacramento Steps Forward, or \$825k in 2016 federal and state Emergency Solutions Grant and \$462k in CDBG homelessness activities administered by SHRA for Sacramento County.*

# City Homeless Cost by Activity (FY 14/15)



*Subsequent to this analysis, the City increased its commitment to funding homeless serving programs, and now has over \$3 million of general funds (up from \$1.3 million in FY 14/15) in programs providing direct services and supports to homeless households.*

# County-level Strategic Priorities

1. Improve Sacramento's homelessness crisis response system so that we are providing the quickest and best path to permanent housing.
2. Invest in what we know works to help people who are experiencing homelessness achieve housing stability as quickly as possible, especially those not reached with traditional approaches.
3. Increase permanent housing opportunities.
4. Take advantage of No Place Like Home (NPLH) to create new permanent supportive housing for persons experiencing homelessness with serious mental illness.

# City Homeless Subcommittee Principles

1. Compassion
2. Ending Homelessness, not Poverty
3. Evidence Based, Outcomes Oriented
4. Responsive to the Crisis
5. Housing First
6. Mutual Responsibility & Partnerships
7. Integration into the Continuum of Care